

Protective pipes and fittings

Conduits - steel, stainless steel, steel + PVC

Flexible conduit made of galvanized steel, WO type	67
Flexible conduit made of stainless steel, WO...S type	68
Flexible protective conduit made of galvanized steel, PVC coated, WOT type	69

Accessories for steel conduits

Brass fitting, MWO; MWO...M type	71
Steel fitting for protective conduits, MWO...S type	72
Fitting, MWE...M type	73
Fitting, MWE...G type	74
Grounding insert, WE type	75
Insulating insert, WI type	75

Corrugated polyamide conduits

Standard corrugated protective conduit made of polyamide, WTE type	76
Light corrugated protective conduit made of polyamide, WTE...L type	77
Reinforced corrugated protective conduit made of polyamide, WTE...W type	78
Corrugated protective conduit made of polyamide for moving connections, WTE...R type	79

Accessories for corrugated polyamide conduits

Fitting, FD; FD...BK type	80
Fitting, FKD; FKD...BK type	81

Flexible conduit made of galvanized steel, WO type

FEATURES & BENEFITS



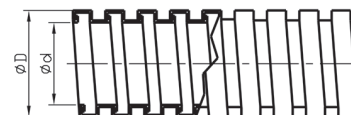
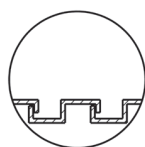
flexible steel conduits for cable and bundle protection



sufficient degree of protection (IP) for operation in dry rooms



high mechanical strength



CE

Designed first of all for protection against mechanical damages. It protects wiring against short-time contact with hot water or steam piping, and even with open fire (but only against so-called "light touch"). Used with MWO and MWE glands.

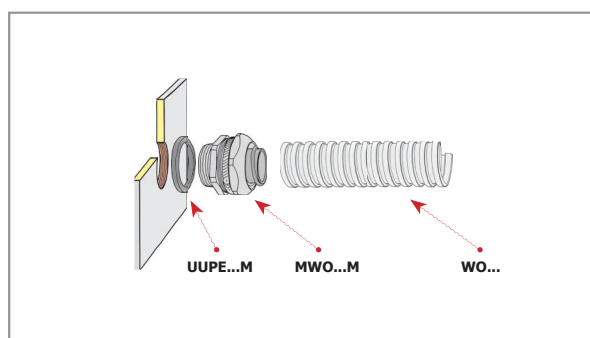
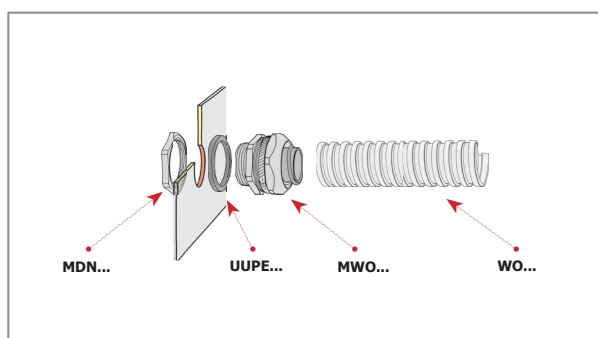
MECHANICAL DATA

Material	galvanized steel
Halogen-free	yes
Operating temperature [°C]	-80 ÷ +300
Corrosion resistance	1 (low) EN 61386-1
Compression strength	4 (1250 N)

CERTIFICATES & STANDARDS

IP degree of protection	IP40, EN 60529
Standards	EN 61386-1; EN 61386-23

Type	d	D	Min. bending radius [mm]	Quantity in package [m]
WO 7	10	13	28	50
WO 9	11	15	34	50
WO 11	15	18	40	50
WO 13	17	20	45	50
WO 16	18	22	50	50
WO 21	24	28	63	25
WO 29	32	37	85	25
WO 36	41	47	100	15
WO 48	54	60	125	15
WO 63	63	70	150	10
WO 75	77	85	175	10
WO 100	100	109	225	10
WO 9/10	11	15	34	10
WO 7/10	10	13	28	10
WO 11/10	15	18	40	10
WO 13/10	17	20	45	10
WO 16/10	18	22	50	10
WO 21/10	24	28	63	10
WO 29/10	32	37	85	10
WO 36/5	41	47	100	5
WO 48/5	54	60	125	5



Flexible conduit made of stainless steel, WO...S type

FEATURES & BENEFITS

- ☒ flexible stainless-steel conduits for cable and bundle protection
- ☒ sufficient degree of protection (IP) for operation in dry rooms
- ☒ high mechanical strength, resistance to difficult ambient conditions

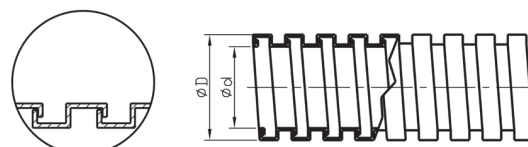
Designed first of all for protection against mechanical damages. It protects wiring against short-time contact with hot water or steam piping, and even with open fire (but only against so-called "light touch"). It has high resistance to aggressive media occurring in industry. Used with MWD and MWD...S glands.

MECHANICAL DATA

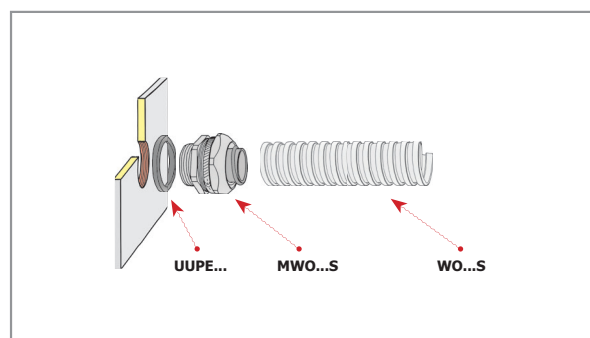
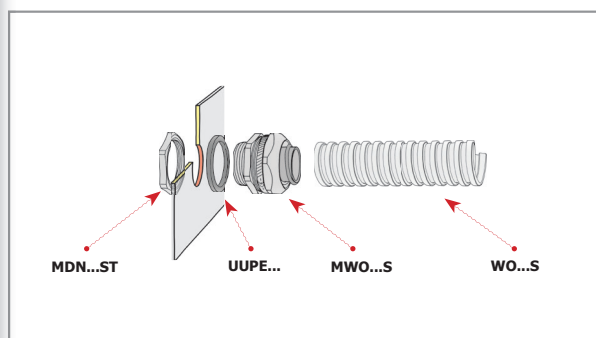
Material	304 AISI steel
Halogen-free	yes
Operating temperature [°C]	-80 ÷ +500
Corrosion resistance	4 (hight) EN61386-1
Compression strength	4 (1250 N)

CERTIFICATES & STANDARDS

IP degree of protection	IP40
Standards	EN 61386-1; EN 61386-23



Type	d	D	Min. bending radius [mm]	Quantity in package [m]
WO 7 S	10	13	28	50
WO 9 S	11	15	34	50
WO 11 S	15	18	40	50
WO 13 S	17	20	45	50
WO 16 S	18	22	50	50
WO 21 S	24	28	63	25
WO 29 S	32	37	85	25
WO 36 S	41	47	100	15
WO 48 S	54	60	125	15
WO 7/10 S	10	13	28	10
WO 9/10 S	11	15	34	10
WO 11/10 S	15	18	40	10
WO 13/10 S	17	20	45	10
WO 16/10 S	18	22	50	10
WO 21/10 S	24	28	63	10
WO 29/10 S	32	37	85	10
WO 36/5 S	41	47	100	5
WO 48/5 S	54	60	125	5



Flexible protective conduit made of galvanized steel, PVC coated, WOT type

FEATURES & BENEFITS



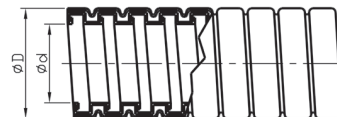
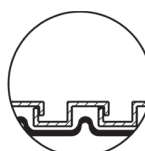
flexible steel PVC-coated conduits for cable and bundle protection



together with dedicated fixtures, ensures IP66 degree of protection



high mechanical strength, resistance to difficult ambient conditions



MECHANICAL DATA

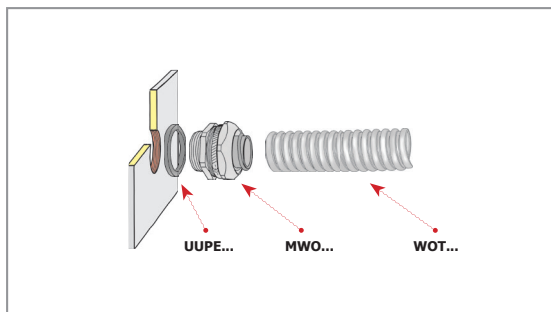
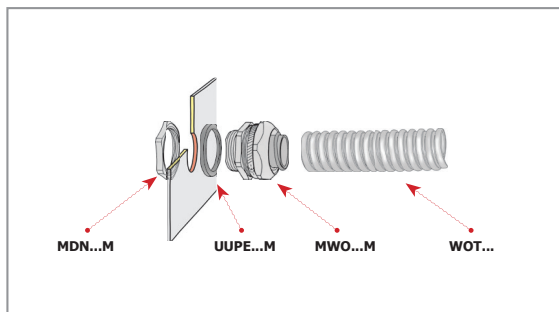
Material	galvanized steel + PVC
Operating temperature [°C]	-5 ÷ +80 (without moving: -20 ÷ +80)
Corrosion resistance	3 (average) EN61386-1
Compression strength	4 (1250 N)

CERTIFICATES & STANDARDS

IP degree of protection	IP66
Standards	EN 61386-1; EN 61386-23





Type	d	D	Colour	Min. bending radius [mm]	Quantity in package [m]
WOT 7	9,4	13,0	grey	32	50
WOT 9	11,0	15,2	grey	40	50
WOT 11	14,0	18,6	grey	45	50
WOT 13	15,0	20,4	grey	52	50
WOT 16	17,0	22,5	grey	58	50
WOT 21	22,0	28,3	grey	72	25
WOT 29	30,0	37,0	grey	96	25
WOT 36	39,0	47,0	grey	118	15
WOT 48	50,0	60,0	grey	140	15
WOT 63	63,0	72,0	grey	200	10
WOT 75	78,0	88,0	grey	225	10
WOT 100	102,0	112,0	grey	275	10
WOT 7 BK	9,4	13,0	black	32	50
WOT 9 BK	11,0	15,2	black	40	50
WOT 11 BK	14,0	18,6	black	45	50
WOT 13 BK	15,0	20,4	black	52	50
WOT 16 BK	17,0	22,5	black	58	50
WOT 21 BK	22,0	28,3	black	72	25
WOT 29 BK	30,0	37,0	black	96	25
WOT 36 BK	39,0	47,0	black	118	15
WOT 48 BK	50,0	60,0	black	140	15
WOT 63 BK	63,0	72,0	black	200	10
WOT 75 BK	78,0	88,0	black	225	10
WOT 100 BK	102,0	112,0	black	275	10
WOT 7/10	9,4	13,0	grey	32	10
WOT 9/10	11,0	15,2	grey	40	10
WOT 11/10	14,0	18,6	grey	45	10
WOT 13/10	15,0	20,4	grey	52	10
WOT 16/10	17,0	22,5	grey	58	10
WOT 21/10	22,0	28,3	grey	72	10
WOT 29/10	30,0	37,0	grey	96	10
WOT 36/5	39,0	47,0	grey	118	5
WOT 48/5	50,0	60,0	grey	140	5
WOT 7/10 BK	9,4	12,5	black	32	10
WOT 9/10 BK	11,0	15,2	black	40	10

Type	d	D	Colour	Min. bending radius [mm]	Quantity in package [m]
WOT 11/10 BK	14,0	18,6	black	45	10
WOT 13/10 BK	15,0	20,4	black	52	10
WOT 16/10 BK	17,0	22,5	black	58	10
WOT 21/10 BK	22,0	28,3	black	72	10
WOT 29/10 BK	30,0	37,0	black	96	10
WOT 36/5 BK	39,0	47,0	black	118	5
WOT 48/5 BK	50,0	60,0	black	140	5



Brass fitting, MWO; MWO...M type

FEATURES & BENEFITS

-  nickel-plated brass connectors for WO, WO...S and WOT conduits, standard industrial conditions
-  to route cables protected by WO, WOT piping into enclosures
-  together with WOT conduits, ensures IP66 degree of protection
-  high mechanical and impact strength

Recommended for WO, WOT conduits.

MECHANICAL DATA

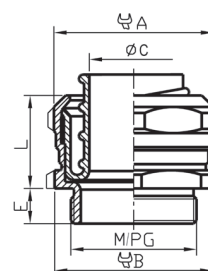
Material	nickel-plated brass + polyethylene insert
Halogen-free	yes
Operating temperature [°C]	-30 ÷ +80

CERTIFICATES & STANDARDS

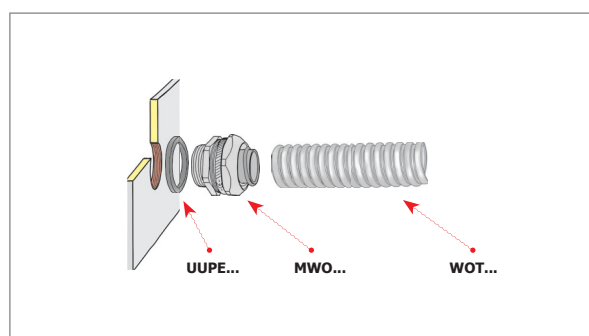
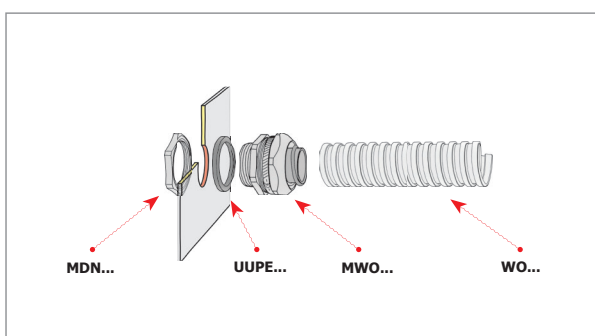
IP degree of protection	IP66
-------------------------	------

NOTE!

MDN, MDN...M nuts and UUPE, UUPE ..M gland seals have to be ordered separately.



Type	For spanner A	For spanner B	L	C	E	M thread	PG thread	Tube type	Quantity in package [pcs]
MWO 7	19	17	10,00	7,5	6,0		P7	WO 7, WO 7 S, WOT 7	50 / 10
MWO 9	22	20	12,50	9,2	6,0		P9	WO 9, WO 9 S, WOT 9	50 / 10
MWO 11	26	24	15,70	11,9	7,0		P11	WO 11, WO 11 S, WOT 11	50 / 10
MWO 13	28	26	13,00	13,6	7,0		P13,5	WO 13, WO 13 S, WOT 13	50 / 10
MWO 16	30	28	14,00	15,3	8,0		P16	WO 16, WO 16 S, WOT 16	50 / 10
MWO 21	36	34	20,00	20,2	8,0		P21	WO 21, WO 21 S, WOT 21	10
MWO 29	47	45	13,50	26,7	10,0		P29	WO 29, WO 29 S, WOT 29	10
MWO 36	60	56	26,50	34,6	11,0		P36	WO 36, WO 36 S, WOT 36	1
MWO 48	74	70	33,00	45,3	15,0		P48	WO 48, WO 48 S, WOT 48	10 / 1
MWO 12M/7	19	17	10,20	7,5	6,0	M12x1,5		WO 7, WO 7 S, WOT 7	50 / 10
MWO 16M/9	22	20	12,50	9,2	6,0	M16x1,5		WO 9, WO 9 S, WOT 9	50 / 10
MWO 20M/11	26	24	13,00	11,9	7,0	M20x1,5		WO 11, WO 11 S, WOT 11	50 / 10
MWO 20M/13	28	26	15,70	13,6	7,0	M20x1,5		WO 13, WO 13 S, WOT 13	50 / 10
MWO 25M/16	30	28	14,00	15,3	8,0	M25x1,5		WO 16, WO 16 S, WOT 16	25 / 10
MWO 25M/21	36	34	20,48	20,2	8,0	M25x1,5		WO 21, WO 21 S, WOT 21	25 / 10
MWO 32M/21	36	36	16,50	20,2	8,0	M32x1,5		WO 21, WO 21 S, WOT 21	25 / 10
MWO 32M/29	47	45	22,90	26,7	8,0	M32x1,5		WO 29, WO 29 S, WOT 29	25 / 10
MWO 40M/29	47	45	19,50	26,7	10,0	M40x1,5		WO 29, WO 29 S, WOT 29	10 / 1
MWO 40M/36	60	56	26,00	34,6	8,5	M40x1,5		WO 36, WO 36 S, WOT 36	10 / 1
MWO 50M/36	60	58	26,00	34,6	11,0	M50x1,5		WO 36, WO 36 S, WOT 36	10 / 1
MWO 63M/48	74	70	32,50	45,3	15,0	M63x1,5		WO 48, WO 48 S, WOT 48	10 / 1



Steel fitting for protective conduits, MWO...S type

FEATURES & BENEFITS

- ☒ stainless-steel connectors for WO...S conduits, standard industrial conditions
- ☒ to route cables protected by WOS, WOT piping into enclosures
- ☒ together with WOT conduits, ensures IP66 degree of protection
- ☒ high mechanical and impact strength, resistance to difficult ambient conditions

LOGISTIC DATA

Quantity in package [pcs] 1

Recommended for WO...S conduits. The tube is screwed into the gland.

MECHANICAL DATA

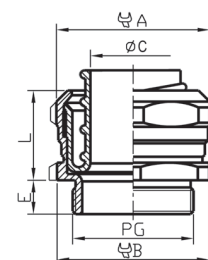
Material stainless steel+ polyethylene insert
Halogen-free yes
Operating temperature [°C] -30 ÷ +80

CERTIFICATES & STANDARDS

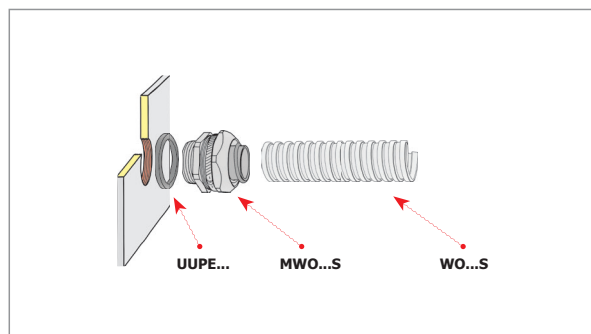
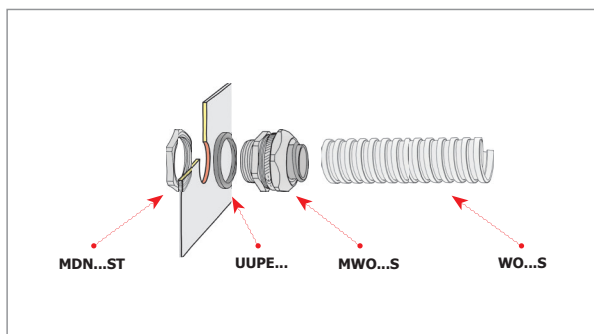
IP degree of protection IP66

NOTE!

MDN...ST nuts and gland seals have to be ordered separately.



Type	For spanner A	For spanner B	L	C	E	PG thread
MWO 7S	19	17	10,0	7,5	6	P7
MWO 9S	22	20	12,5	9,2	6	P9
MWO 11S	27	24	13,0	11,9	7	P11
MWO 13S	29	26	13,0	13,6	7	P13,5
MWO 16S	30	28	14,0	15,3	7	P16
MWO 21S	36	34	16,5	20,2	8	P21
MWO 29S	47	45	19,5	26,7	8	P29
MWO 36S	60	56	26,5	34,6	10	P36
MWO 48S NFC	74	70	33,0	45,3	10	P48 NFC



Fitting, MWE...M type

FEATURES & BENEFITS



protective pipe connectors, M thread



for piping with very large diameters, up to 100 mm

LOGISTIC DATA

Quantity in package [pcs] 1

MECHANICAL DATA

Material body: zinc alloy; insert: galvanized steel; seal: rubber

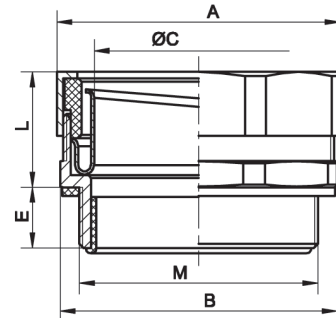
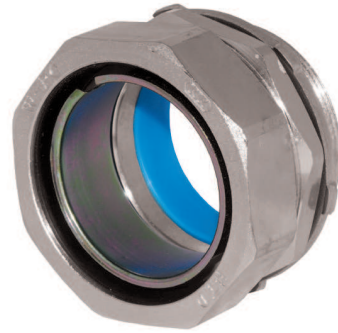
Operating temperature [°C] -30 ÷ +80

CERTIFICATES & STANDARDS

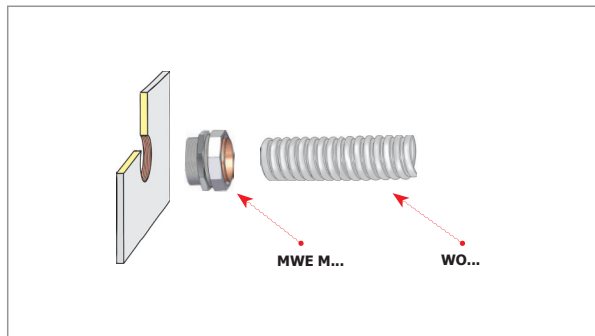
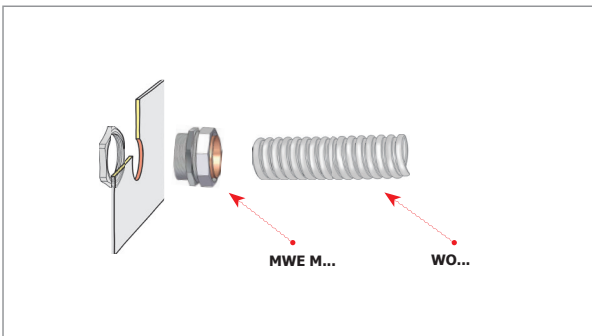
IP degree of protection IP66

NOTE!

Set with sealing washer, without lock nut



Type	For spanner A	For spanner B	L	C	E	M thread	Tube type
MWE 75M/63	88	86	40	60	22	M 75x1,5	WO 63, WOT 63
MWE 90M/75	106	102	44	74	23	M 90x2	WO 75, WOT 75



Fitting, MWE...G type

FEATURES & BENEFITS

- ☒ protective pipe connectors, G thread
- ☒ for piping with very large diameters, up to 100 mm

LOGISTIC DATA

Quantity in package [pcs] 1

MECHANICAL DATA

Material body: zinc alloy; insert: galvanized steel; nut: galvanized steel (ST) or a zinc alloy (ZN); seal: rubber

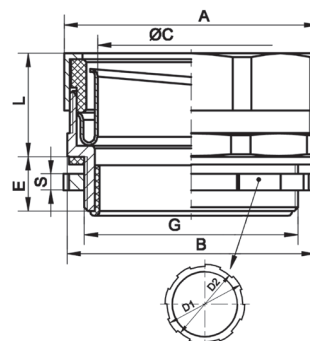
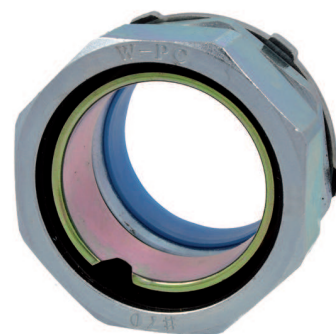
Operating temperature [°C] -30 ÷ +80

CERTIFICATES & STANDARDS

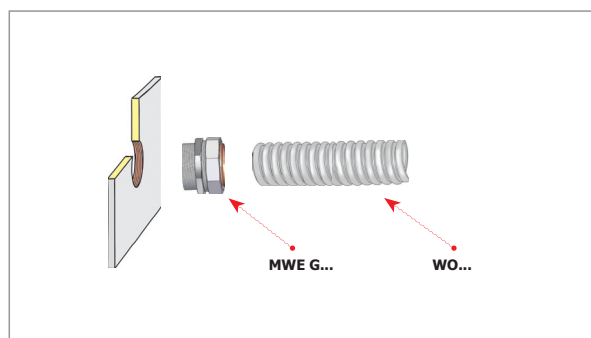
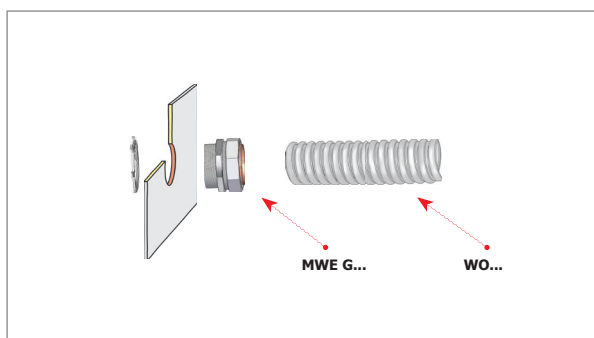
IP degree of protection IP66

NOTE!

Set with lock nut and sealing washer.



Type	For spanner A	For spanner B	L	C	E	D ₁	D ₂	S	G thread	Tube type
MWE G2 1/2"/63	88	86	40	60	22	94	88	4,5 (ST)	G 2 1/2"	WO 63, WOT 63
MWE G3"/75	106	102	44	74	23	106	101	4,5 (ST)	G 3"	WO 75, WOT 75
MWE G4"/100	133	130	50	96	28	134	128	10 (ZN)	G 4"	WO 100, WOT 100



Grounding insert, WE type

FEATURES & BENEFITS



ensures galvanic connection of WO, WO.S and WOT conduits with MWO glands

Used when an electrical connect between the gland and conduit is required. The original insert must be removed from the gland and replaced with the grounding insert. The insert is delivered separately to be replaced by the customer.



MECHANICAL DATA

Material	brass+polyethylene
Halogen-free	yes
Operating temperature [°C]	-30 ÷ +80

NOTE!

WE inserts for MWO connectors with metric threads are selected WO, WOT conduits.

Type	Gland type	Quantity in package [pcs]
WE 7	MWO 7, MWO 12M/7, MWO 7 S	10
WE 9	MWO 9, MWO 16M/9, MWO 9 S	10
WE 11	MWO 11, MWO 20M/11, MWO 11 S	10
WE 13	MWO 13, MWO 20M/13, MWO 13 S	10
WE 16	MWO 16, MWO 25M/16, MWO 16 S	10
WE 21	MWO 21, MWO 25M/21, MWO 32M/21, MWO 21 S	10
WE 29	MWO 29, MWO 32M/29, MWO 40M/29, MWO 29 S	10
WE 36	MWO 36, MWO 40M/36, MWO 50M/36, MWO 36 S	1
WE 48	MWO 48, MWO 63M/48, MWO 48 S NFC	1

Insulating insert, WI type

FEATURES & BENEFITS



inserts of MWO facilitating their reuse after disassembly

Spare part for the MWO, MWO...S gland.

MECHANICAL DATA

Material	polyethylene
Halogen-free	yes
Operating temperature [°C]	-30 ÷ +80



NOTE!

WE inserts for MWO connectors with metric threads are selected WO, WOT conduits.

Type	Gland type	Quantity in package [pcs]
WI 7	MWO 7, MWO 12M/7, MWO 7 S	50
WI 9	MWO 9, MWO 16M/9, MWO 9 S	50
WI 11	MWO 11, MWO 20M/11, MWO 11 S	50
WI 13	MWO 13, MWO 20M/13, MWO 13 S	50
WI 16	MWO 16, MWO 25M/16, MWO 16 S	50
WI 21	MWO 21, MWO 25M/21, MWO 32M/21, MWO 21 S	25
WI 29	MWO 29, MWO 32M/29, MWO 40M/29, MWO 29 S	25
WI 36	MWO 36, MWO 40M/36, MWO 50M/36, MWO 36 S	10
WI 48	MWO 48, MWO 63M/48, MWO 48 S NFC	10

Standard corrugated protective conduit made of polyamide, WTE type

FEATURES & BENEFITS

- ☒ corrugated conduits for bundle protection
- ☒ for all environmental conditions, except for some concentrated chemical compounds
- ☒ together with dedicated fixtures, ensures IP40 - IP67 degree of protection
- ☒ medium mechanical strength

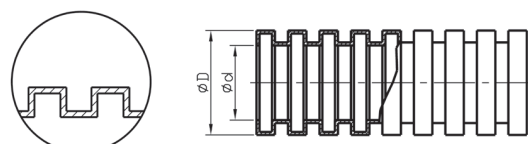
Used in aggressive atmospheres. Resistant to most aggressive media occurring in industry, such as petrol, oil, grease, diluted acids and bases. It can operate under marine climate conditions. Suitable for connections where occasional movements are required (several bends a day). Used with the glands: FD, FKD, SFD and SFKD, and with connectors: LRS, LT, LTR, LR i LTP.

MECHANICAL DATA

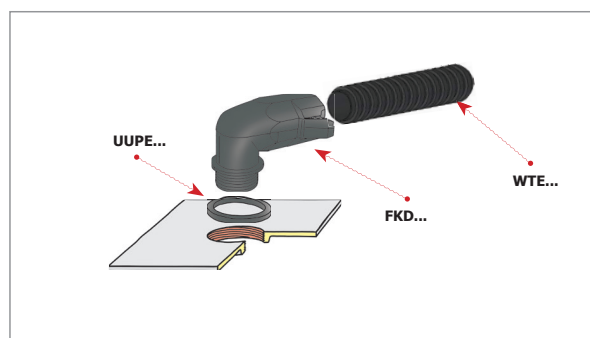
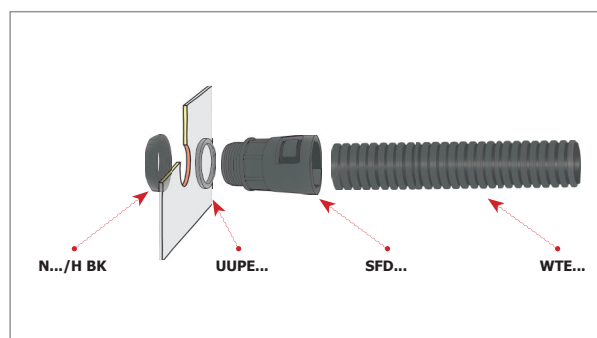
Material	polyamide 6
Halogen-free	yes
Operating temperature [°C]	-5 ÷ +90 (without moving: -40 ÷ +120)
Colour	black (RAL 9005)
Compression strength	350 N

CERTIFICATES & STANDARDS

IP degree of protection	IP67
Flammability class	EN 61386-1:2011 - flame retardant, UL 94 HB, halogen free
Standards	EN 61386-1:2222; EN 61386-23







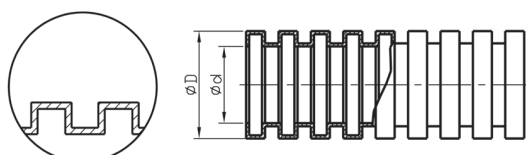
Type	d	D	Min. bending radius [mm]	Quantity in package [m]
WTE 7	6,5	10,0	25	50
WTE 9	9,6	13,0	30	50
WTE 11	11,6	15,8	35	50
WTE 13	14,0	18,6	40	50
WTE 16	16,5	21,2	45	50
WTE 21	21,7	28,5	50	50
WTE 29	27,7	34,5	63	50
WTE 36	35,2	42,5	85	25
WTE 48	46,5	54,5	100	25



Light corrugated protective conduit made of polyamide, WTE...L type

FEATURES & BENEFITS

-  corrugated conduits for bundle protection
-  for all environmental conditions, except for some concentrated chemical compounds
-  together with dedicated fixtures, ensures IP40 - IP68 degree of protection
-  low mechanical strength



Used in aggressive atmospheres. Resistant to most aggressive media occurring in industry, such as petrol, oil, grease, diluted acids and bases. It can operate under marine climate conditions. Suitable for connections where occasional movements are required (several bends a day). Used with the glands: FD, FKD, SFD and SFKD, and with connectors: LRS, LT, LTR, LR i LTP.

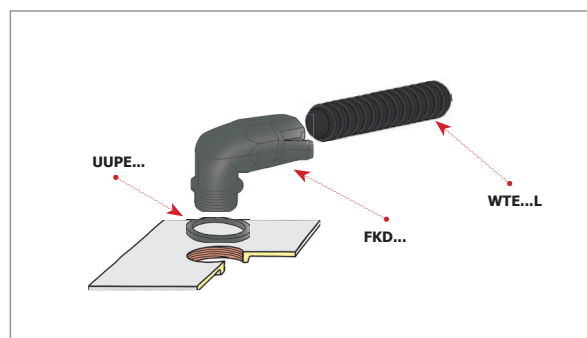
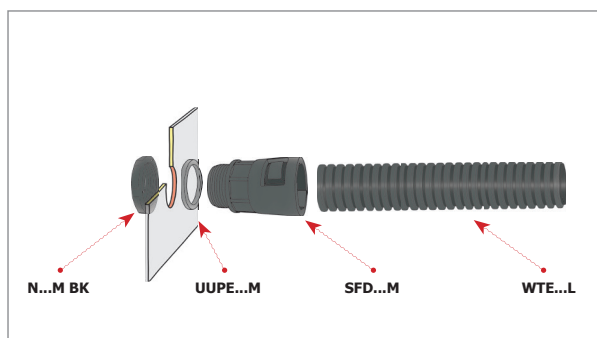
MECHANICAL DATA

Material	polyamide 6
Halogen-free	yes
Operating temperature [°C]	-5 ÷ +90 (without moving: -40 ÷ +120)
Colour	black (RAL 9005)
Compression strength	200 N

CERTIFICATES & STANDARDS

IP degree of protection	IP67
Flammability class	EN 61386-1:2011 - flame retardant, UL 94 HB, halogen free
Standards	EN 61386-1:1122; EN 61386-23

Type	d	D	Min. bending radius [mm]	Quantity in package [m]
WTE 7L	6,7	10,0	20	50
WTE 9L	10,0	13,0	25	50
WTE 11L	11,9	15,8	35	50
WTE 13L	14,3	18,6	40	50
WTE 16L	16,8	21,2	45	50
WTE 21L	22,2	28,5	50	50
WTE 29L	27,9	34,5	60	50
WTE 36L	35,6	42,5	65	25
WTE 48L	46,9	54,5	75	25



Reinforced corrugated protective conduit made of polyamide, WTE...W type

FEATURES & BENEFITS

- ☒ corrugated conduits for bundle protection
- ☒ for all environmental conditions, except for some concentrated chemical compounds
- ☒ together with dedicated fixtures, ensures IP40 - IP69 degree of protection
- ☒ high mechanical strength

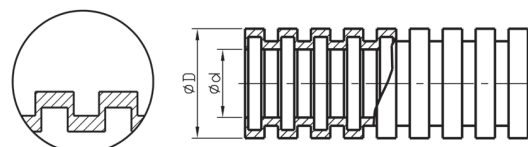
Used in aggressive atmospheres. Resistant to the most aggressive media occurring in industry, such as petrol, oil, grease, diluted acids and bases. It can operate under marine climate conditions. Suitable for connections where occasional movements are required (several bends a day). Used with the glands: FD, FKD, SFD and SFKD, and with connectors: LRS, LT, LTR, LR i LTP. The product is CE marked.

MECHANICAL DATA

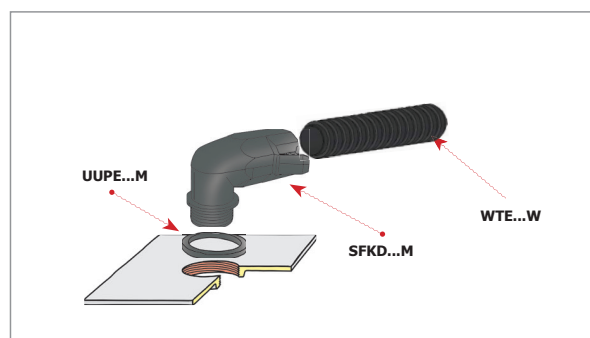
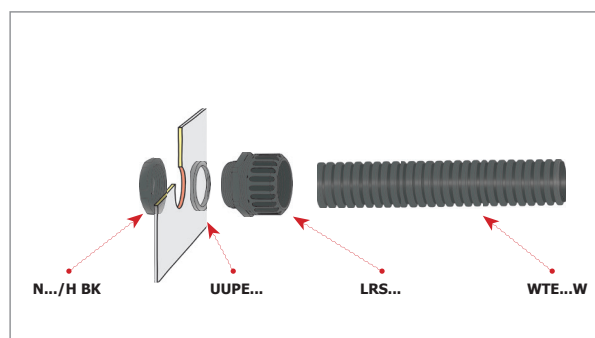
Material	polyamide 6
Halogen-free	yes
Operating temperature [°C]	-5 ÷ +90 (without moving: -40 ÷ +120)
Colour	black (RAL 9005)
Compression strength	600 N

CERTIFICATES & STANDARDS

IP degree of protection	IP67
Flammability class	EN 61386-1:2011 - flame retardant, UL 94 HB, halogen free
Standards	EN 61386-1:2222; EN 61386-23







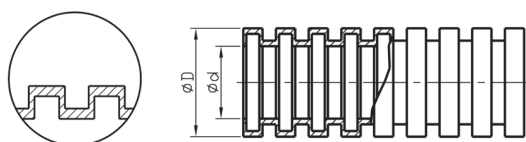
Type	d	D	Min. bending radius [mm]	Quantity in package [m]
WTE 7W	6,2	10,0	25	50
WTE 9W	9,0	13,0	35	50
WTE 11W	11,3	15,8	45	50
WTE 13W	13,6	18,6	50	50
WTE 16W	15,9	21,2	60	50
WTE 21W	21,3	28,5	70	50
WTE 29W	26,8	34,5	75	50
WTE 36W	34,6	42,5	90	25
WTE 48W	46,0	54,5	95	25



Corrugated protective conduit made of polyamide for moving connections, WTE...R type

FEATURES & BENEFITS

-  corrugated conduits for cable bundle protection in movable connections
-  for all environmental conditions, including low temperatures, except for some concentrated chemical compounds
-  together with dedicated fixtures, ensures IP40 - IP67 degree of protection
-  high mechanical strength



Used in aggressive atmospheres. Resistant to the most aggressive media occurring in industry, such as petrol, oil, grease, diluted acids and bases. It can operate under marine climate conditions. Suitable for connections where occasional movements are required (several bends a day). Used with the glands: FD, FKD, SFD and SFKD, and with connectors: LRS, LT, LTR, LR i LTP. The product is CE marked.

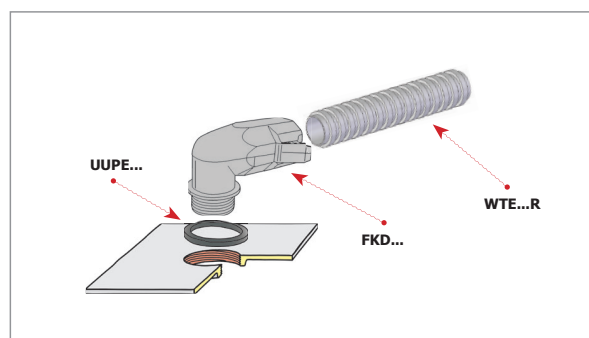
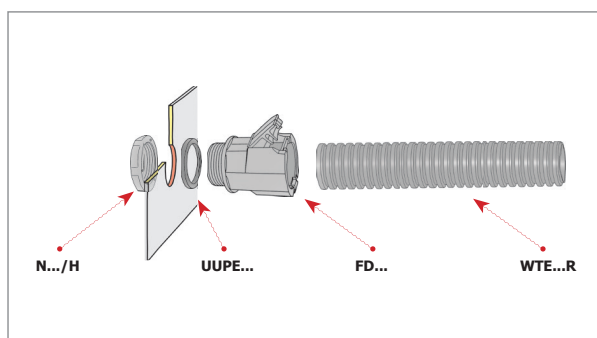
MECHANICAL DATA

Material	polyamide 12
Halogen-free	yes
Operating temperature [°C]	-25 ÷ +85 (without movement: -50 ÷ +90)
Colour	grey RAL 7012
Compression strength	200 N

CERTIFICATES & STANDARDS




IP degree of protection	IP67
Flammability class	EN 61386-1:2011 - flame retardant, UL 94 V2, halogen free
Standards	EN 61386-1:1241; EN 61386-24

Type	d	D	Min. bending radius [mm]	Quantity in package [m]
WTE 7R	6,5	10,0	25	50
WTE 9R	9,9	13,0	30	50
WTE 11R	11,7	15,8	35	50
WTE 13R	14,0	18,6	40	50
WTE 16R	16,5	21,2	45	50
WTE 21R	21,7	28,5	50	50
WTE 29R	27,7	34,5	63	50
WTE 36R	35,2	42,5	85	25
WTE 48R	46,5	54,5	100	25



Fitting, FD; FD...BK type

FEATURES & BENEFITS

-  connectors used to route WTE conduits into enclosures, PG threads
-  repeated installation possible
-  grey or black

Used for quick connecting WTE type corrugated conduits; easy assembly (by bending the wings)

MECHANICAL DATA

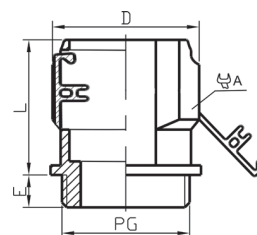
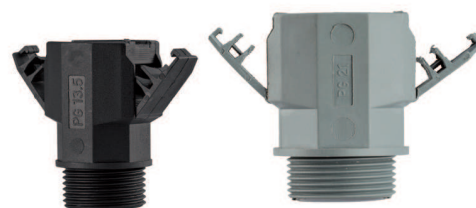
Material	polyamide 6
Halogen-free	yes
Operating temperature [°C]	-40 ÷ +120
Colour	grey; black (BK)

CERTIFICATES & STANDARDS

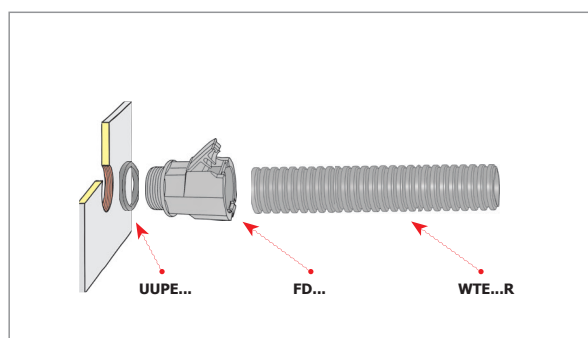
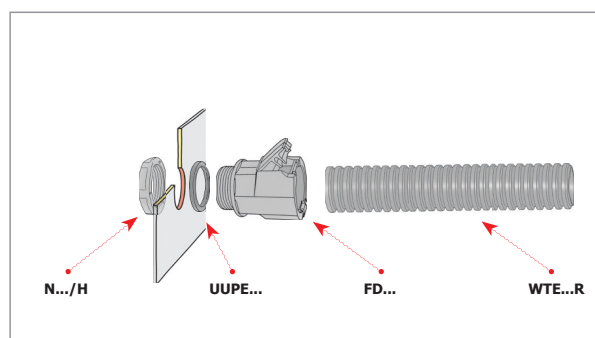
IP degree of protection	IP54
-------------------------	------

NOTE!

N../H, N../H BK nuts and UUPE gland seals have to be ordered separately.



Type	For spanner A	D	L	E	PG thread	Tube inside diameter [mm]	Tube outside diameter [mm]	Tube type	Quantity in package [pcs]
FD 7	13	18,2	29,0	10,0	P7	6,5	10,0	WTE 7, WTE 7L, WTE 7R, WTE 7W	10
FD 9	18	21,3	29,5	10,0	P9	9,6	13,0	WTE 9, WTE 9L, WTE 9R, WTE 9W	10
FD 11	19	24,0	30,5	10,0	P11	11,6	15,8	WTE 11, WTE 11L, WTE 11R, WTE 11W	10
FD 13	22	26,7	30,0	10,0	P13,5	14,0	18,6	WTE 13, WTE 13L, WTE 13R, WTE 13W	10
FD 16	26	29,7	30,5	10,0	P16	16,5	21,2	WTE 16, WTE 16L, WTE 16R, WTE 16W	10
FD 21	32	38,0	36,7	11,0	P21	21,7	28,5	WTE 21, WTE 21L, WTE 21R, WTE 21W	10
FD 29	40	45,2	41,8	12,0	P29	27,7	34,5	WTE 29, WTE 29L, WTE 29R, WTE 29W	10
FD 36	48,7-48,9	54,0	45,4	12,0	P36	35,2	42,5	WTE 36, WTE 36L, WTE 36R, WTE 36W	1
FD 48	63	71,1	49,9	18,7	P48	46,5	54,5	WTE 48, WTE 48L, WTE 48R, WTE 48W	1
FD 7 BK	13	18,2	29,0	10,0	P7	6,5	10,0	WTE 7, WTE 7L, WTE 7R, WTE 7W	10
FD 9 BK	18	21,3	29,5	10,0	P9	9,6	13,0	WTE 9, WTE 9L, WTE 9R, WTE 9W	10
FD 11 BK	19	24,0	30,5	10,0	P11	11,6	15,8	WTE 11, WTE 11L, WTE 11R, WTE 11W	10
FD 13 BK	22	26,7	30,0	10,0	P13,5	14,0	18,6	WTE 13, WTE 13L, WTE 13R, WTE 13W	10
FD 16 BK	26	29,7	30,5	10,0	P16	16,5	21,2	WTE 16, WTE 16L, WTE 16R, WTE 16W	10
FD 21 BK	32	38,0	36,7	11,0	P21	21,7	28,5	WTE 21, WTE 21L, WTE 21R, WTE 21W	10
FD 29 BK	40	45,2	41,8	12,0	P29	27,7	34,5	WTE 29, WTE 29L, WTE 29R, WTE 29W	10
FD 36 BK	48,7-48,9	54,0	45,4	12,0	P36	35,2	42,5	WTE 36, WTE 36L, WTE 36R, WTE 36W	1
FD 48 BK	63	71,1	49,9	18,7	P48	46,5	54,5	WTE 48, WTE 48L, WTE 48R, WTE 48W	1



Insulating fitting, FKD; FKD...BK type

FEATURES & BENEFITS



connectors used to route WTE conduits into enclosures, PG threads



repeated installation possible



grey or black



Used for quick connecting WTE type conduits; easy disassembly (by bending the wings)

MECHANICAL DATA

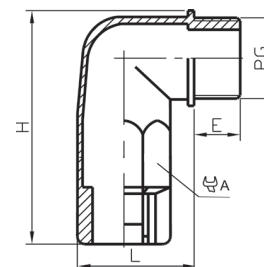
Material	polyamide 6
Halogen-free	yes
Operating temperature [°C]	-40 ÷ +120
Colour	grey; black (BK)

CERTIFICATES & STANDARDS

IP degree of protection	IP54
-------------------------	------

NOTE!

N../H, N../H BK nuts and UUPE gland seals have to be ordered separately.



Type	For spanner A	L	E	H	PG thread	Tube inside diameter [mm]	Tube outside diameter [mm]	Tube type	Quantity in package [pcs]
FKD 7	13	20,5	10	46,5	P7	6,5	10,0	WTE 7, WTE 7L, WTE 7R, WTE 7W	10
FKD 9	18	25,0	10	53,0	P9	9,6	13,0	WTE 9, WTE 9L, WTE 9R, WTE 9W	10
FKD 11	19	25,5	10	54,5	P11	11,6	15,8	WTE 11, WTE 11L, WTE 11R, WTE 11W	10
FKD 13	22	29,5	10	58,5	P13,5	14,0	18,6	WTE 13, WTE 13L, WTE 13R, WTE 13W	10
FKD 16	26	31,5	11	59,0	P16	16,5	21,2	WTE 16, WTE 16L, WTE 16R, WTE 16W	10
FKD 21	32	38,5	11	74,0	P21	21,7	28,5	WTE 21, WTE 21L, WTE 21R, WTE 21W	10
FKD 29	40	47,0	12	89,0	P29	27,7	34,5	WTE 29, WTE 29L, WTE 29R, WTE 29W	10
FKD 36	50	58,0	12	107,0	P36	35,2	42,5	WTE 36, WTE 36L, WTE 36R, WTE 36W	1
FKD 48	64	72,0	13	121,0	P48	46,5	54,5	WTE 48, WTE 48L, WTE 48R, WTE 48W	1
FKD 7 BK	13	20,5	10	46,5	P7	6,5	10,0	WTE 7, WTE 7L, WTE 7R, WTE 7W	10
FKD 9 BK	18	25,0	10	53,0	P9	9,6	13,0	WTE 9, WTE 9L, WTE 9R, WTE 9W	10
FKD 11 BK	19	25,5	10	54,5	P11	11,6	15,8	WTE 11, WTE 11L, WTE 11R, WTE 11W	10
FKD 13 BK	22	29,5	10	58,5	P13,5	14,0	18,6	WTE 13, WTE 13L, WTE 13R, WTE 13W	10
FKD 16 BK	26	31,5	11	59,0	P16	16,5	21,2	WTE 16, WTE 16L, WTE 16R, WTE 16W	10
FKD 21 BK	32	38,5	11	74,0	P21	21,7	28,5	WTE 21, WTE 21L, WTE 21R, WTE 21W	10
FKD 29 BK	40	47,0	12	89,0	P29	27,7	34,5	WTE 29, WTE 29L, WTE 29R, WTE 29W	10
FKD 36 BK	50	58,0	12	107,0	P36	35,2	42,5	WTE 36, WTE 36L, WTE 36R, WTE 36W	1
FKD 48 BK	64	72,0	13	121,0	P48	46,5	54,5	WTE 48, WTE 48L, WTE 48R, WTE 48W	1

