

Insulated ring terminals in strip, KOTI type

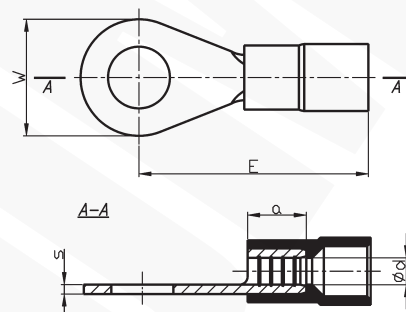
FEATURES & BENEFITS



MECHANICAL DATA

Insulation	polyamide 6.6
Material	Cu
Covering	tin-plated
Operating temperature [°C]	-30 ÷ +95

NOTE!



Type	Index Ergom	Cross-section [mm²]	Insulation colour	Screw hole	DIN	d	s	a	E	W	Quantity in package [pcs]
KOTI 1/3 (2000 PCS)	E09KO-02020100801	0,75÷1	red	M 3	√	1,6	0,8	5	16,0	6,0	2000
KOTI 1/4 (2000 PCS)	E09KO-02020101001			M 4					17,0	7,0	
KOTI 1/5 (2000 PCS)	E09KO-02020101101			M 5					18,0	10,0	
KOTI 1/6 (2000 PCS)	E09KO-02020101201			M 6	–						
KOTI 2,5/4 (2000 PCS)	E09KO-02020101701	1,5÷2,5	blue	M 4	√	2,3	0,8	5	18,0	8,0	2000
KOTI 2,5/5 (2000 PCS)	E09KO-02020101801			M 5					20,0	9,0	
KOTI 2,5/6 (2000 PCS)	E09KO-02020101901			M 6					22,0	11,0	
KOTI 2,5/8 (2000 PCS)	E09KO-02020102001			M 8					23,0	14,0	
KOTI 6/4 (2000 PCS)	E09KO-02020102501	4÷6	yellow	M 4	√	3,6	1,0	6	20,0	8,0	2000
KOTI 6/5 (2000 PCS)	E09KO-02020102601			M 5					21,0	10,0	
KOTI 6/6 (2000 PCS)	E09KO-02020102701			M 6					22,0	12,0	
KOTI 6/8 (1000 PCS)	E09KO-02020102801			M 8					25,0	14,0	1000