

# Butt splice connectors for compressed wires, CKL type

## FEATURES & BENEFITS

- connector Cu, with galvanic tin plating, for cables with "RMC" round multi-wire profiles, Class 2 as per EN60228 2007
- central stamping guarantees correct length of conductor insertion
- to make "butt splice" cable connections
- not mechanically loaded

## MECHANICAL DATA

Material	Cu
Covering	tin-plated

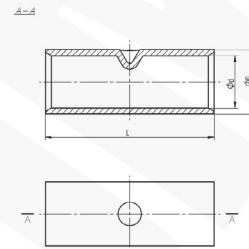
## CERTIFICATES & STANDARDS

Standards	EN 61238-1: 2004 (Class A)
UL certificate	E475284

## NOTE!

Sector-shaped conductors (sm) must be rounded with special dies.

UL certificate - visit [www.ergom.com](http://www.ergom.com)



Type	Index Ergom	Cross-section, rmc [mm <sup>2</sup> ]	d	D	L	Socket code no.	Lz/s	Quantity in package [pcs]	Weight [kg]
CKL 10 (50 PCS)	E11KM-05060200200	10	4,2	6,2	30	C10	1	50	0,24
CKL 16 (50 PCS)	E11KM-05060200300	16	5,5	7,7	30	C16	1	50	0,32
CKL 25 (50 PCS)	E11KM-05060200400	25	6,6	9	30	C25	1	50	0,42
CKL 35 (50 PCS)	E11KM-05060200500	35	7,7	10,6	32	C35	1	50	0,62
CKL 50 (25 PCS)	E11KM-05060200600	50	9,2	12,4	32	C50	1	25	0,41
CKL 70 (25 PCS)	E11KM-05060200700	70	11	14,6	48	C70	1	25	1
CKL 95 (25 PCS)	E11KM-05060200800	95	13	17	48	C95	1	25	1,03
CKL 120 (25 PCS)	E11KM-05060200900	120	14,5	19	50	C120	1	25	1,36
CKL 150 (10 PCS)	E11KM-05060201000	150	16,2	21	52	C150	2	10	0,7
CKL 185 (10 PCS)	E11KM-05060201100	185	18	23	56	C185	2	10	0,85
CKL 240 (10 PCS)	E11KM-05060201200	240	20,6	26	58	C240	2	10	1,05

Lz/s - Number of crimping - wide