





Compression connectors, LMWC type

FEATURES & BENEFITS

-  connector Cu, as per DIN, with galvanic tin plating, to make "butt splice" cable connections
-  description of cable cross-section, crimping die number on crimped part surface
-  for operation with MV equipment; connector shape ensures more even electromagnetic field distribution
-  wide range of solutions facilitating connection of cables of various diameters

LOGISTIC DATA

Quantity in package [pcs] 10

MECHANICAL DATA

Material Cu
Covering tin-plated

ELECTRICAL DATA

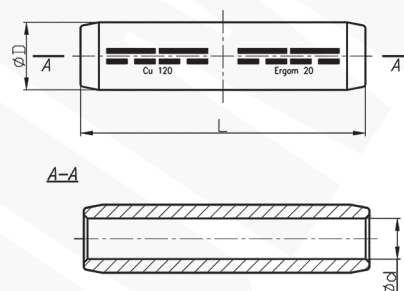
Voltage [kV] 10÷30

CERTIFICATES & STANDARDS

Design DIN 46267 part 1 - concerns only the tubular part

NOTE!

Sector-shaped conductors (sm) must be rounded with special dies.



EAC

Type	Index Ergom	Cross-section, rm/ sm [mm ²]	d	D	L	Socket code no.	Lz/s	Lz/w	Weight [kg]
LMWC 25 (10 PCS)	E11KM-02080200102	25	7,0	10	50	10	1 - 1	2 - 2	0,2
LMWC 35 (10 PCS)	E11KM-02080200202	35	8,2	12,5	50	12	1 - 1	2 - 2	0,3
LMWC 50 (10 PCS)	E11KM-02080200302	50	10,0	14,5	65	14	1 - 1	3 - 3	0,5
LMWC 70 (10 PCS)	E11KM-02080200402	70	11,5	16,5	65	16	1 - 1	3 - 3	0,6
LMWC 95 (10 PCS)	E11KM-02080200502	95	13,5	19,0	90	18	2 - 2	4 - 4	1,1
LMWC 120 (10 PCS)	E11KM-02080200602	120	15,5	21,0	90	20	2 - 2	4 - 4	1,2
LMWC 150 (10 PCS)	E11KM-02080200702	150	17,0	23,5	106	22	2 - 2	4 - 4	1,9
LMWC 185 (10 PCS)	E11KM-02080200802	185	19,0	25,5	106	25	2 - 2	4 - 4	2

Lz/s - Number of crimping - wide Lz/w - Number of crimping - narrow