

Busbar clamps, C type

FEATURES & BENEFITS

- clamps for direct mounting on 5/10 mm thick busbars
- cables with multi-wire conductors can be connected directly
- clamps made of galvanised steel

LOGISTIC DATA

Quantity in package [pcs] 1

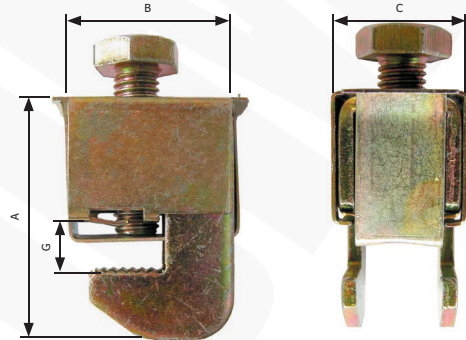
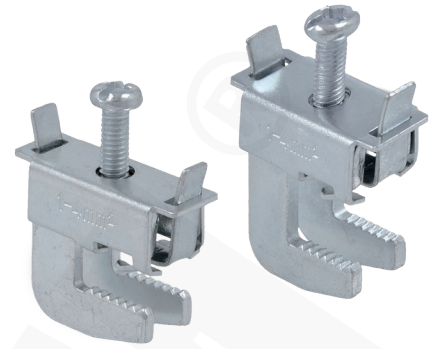
Screwed clamps placed on busbars – cable connection does not require drilling holes in the busbars. The clamps are offered in 2 versions: for 5 and 10 mm wide busbars.

APPLICATION

Connecting cables to busbars in LV switchboards.

MECHANICAL DATA

Material galvanized steel



Type	Index Ergom	Tightening torque [Nm]	Cross-section [mm ²]	Rated busbar thickness [mm]	A	B	C	G	Weight [g]
C-5/4	R32RZ-03040100101	2	1÷4	5	22	22	11	7	17
C-5/16	R32RZ-03040100201	3	2,5÷16	5	27	23	15	7	26
C-5/70	R32RZ-03040100401	10÷12	35÷70	5	43	32	25	7	108
C-5/185	R32RZ-03040100501	12÷15	70÷185	5	49	31	31	7	131
C-10/70	R32RZ-03040200401	10÷12	35÷70	10	48	32	25	12	113